



# Lean in to Continuous Improvement

## L2L Minimizes Disruptions to Improve Your Manufacturing Throughput

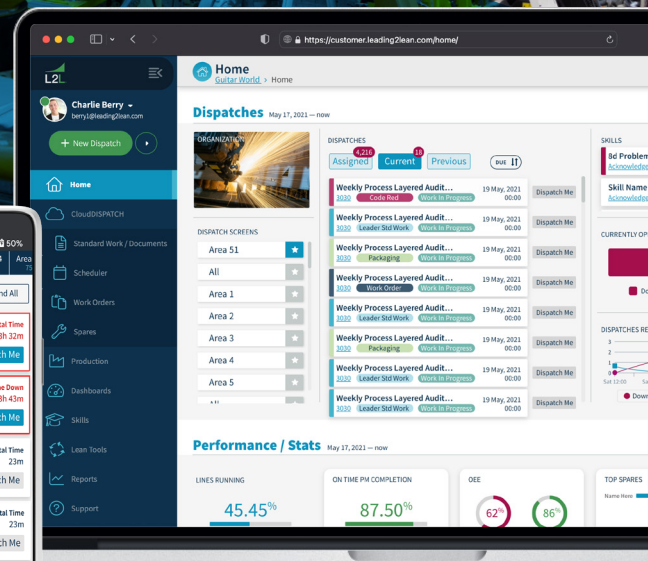
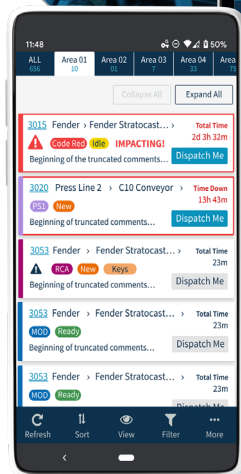
Traditional manufacturing software doesn't coordinate all four components of your plant's success. Only L2L can optimize your people, processes, materials, and machines to reduce downtime and maximize your throughput. L2L's suite of products drive continuous improvement throughout your factory while fostering a sense of accountability and empowerment at every level.

**So lean into L2L's sustained improvement software for a lasting competitive edge**

## Built for Speed, Security, and Continuous Improvement

As native cloud-based technology, L2L's Smart Manufacturing Platform is fast and easy to deploy, highly secure, and continuously improving. Our highly-rated 24/7 support ensures you have the help needed to take on any challenge.

Join the 170,000+ users across 25 countries that use L2L to reduce disruptions, streamline operations, and embrace continuous improvement.



## The L2L Smart Manufacturing Platform

Three software modules working together to improve Operations and Plant Management

- **CloudDISPATCH:** Revolutionary disruption management and work execution system that promotes root-cause problem solving
- **L2L Maintenance:** Implements advanced maintenance strategies that prevent unplanned downtime.
- **L2L Production:** Identifies inefficiencies and bottlenecks; recommends solutions that maximize throughput.

